

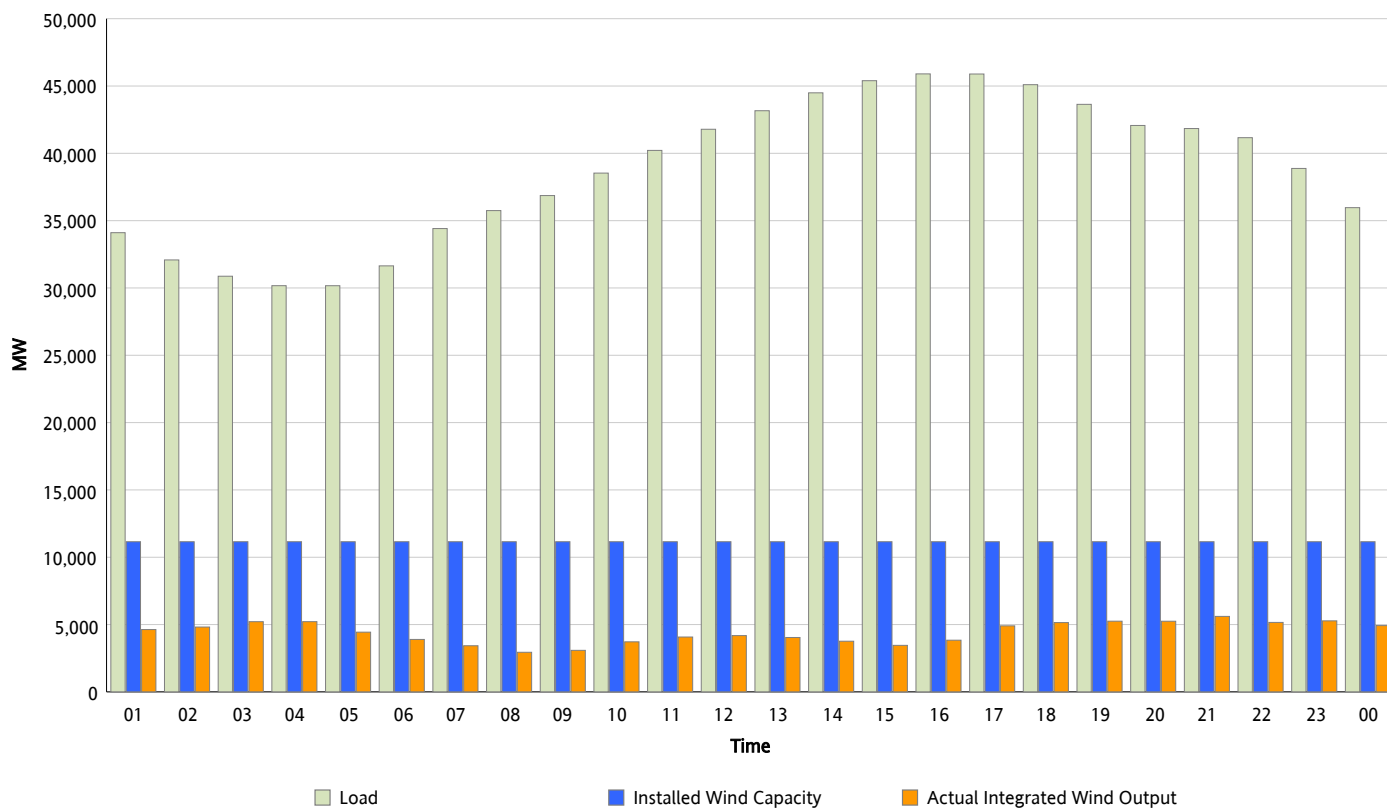


ERCOT Grid Operations

Wind Integration Report : 05/23/2014

| | |
|----------------------|-----------|
| Peak Load | 45,900 MW |
| Load Peak Hour (HE) | 16 |
| Wind Over Peak | 3,839 MW |
| Wind Record 03/26/14 | 10,296 MW |
| Max Wind Value* | 5,809 MW |
| Wind Peak Time | 20:42 |
| Wind Integration % | 13.79 % |

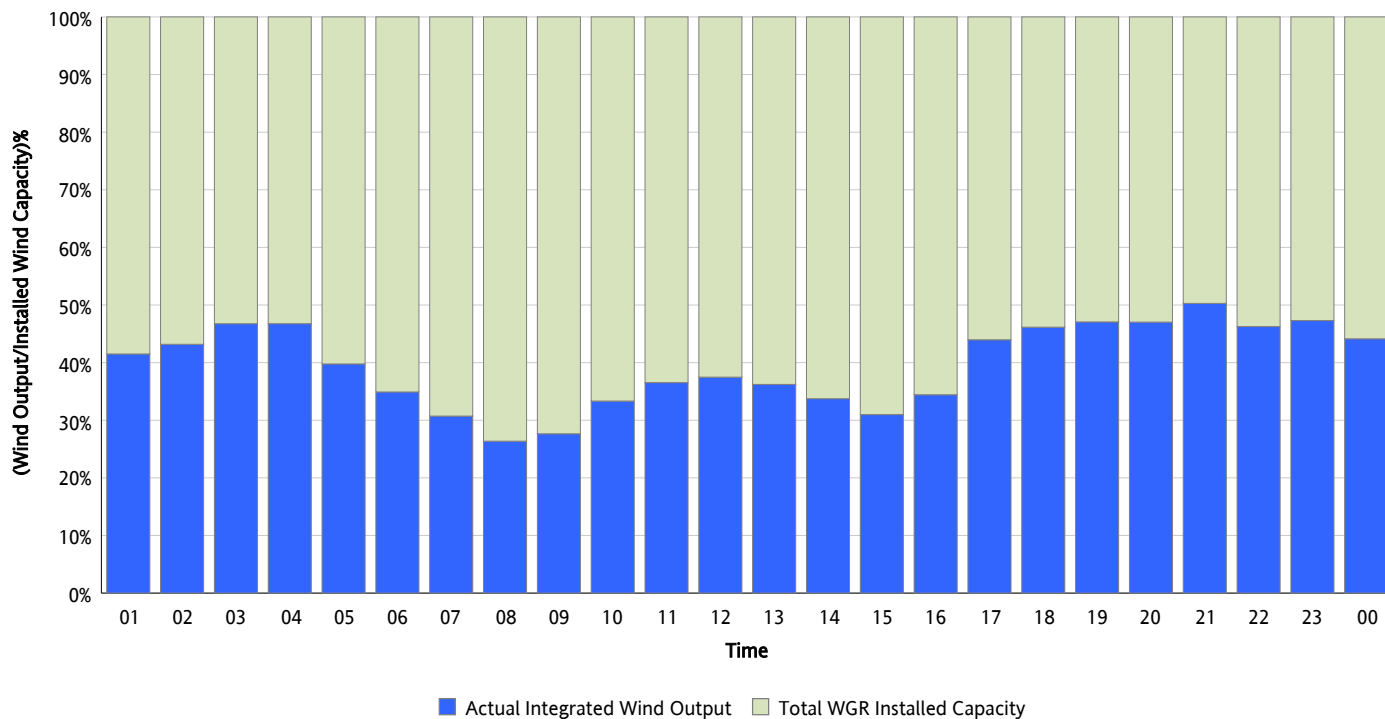
Hourly Average Actual Load vs. Actual Wind Output
05/23/2014



** Wind Record and Wind Max represent instantaneous values and the rest of the values are integrated over the hour.
Capacity numbers used in the graphs are based on the expected commercial operation date of each Wind Generation Resource.*

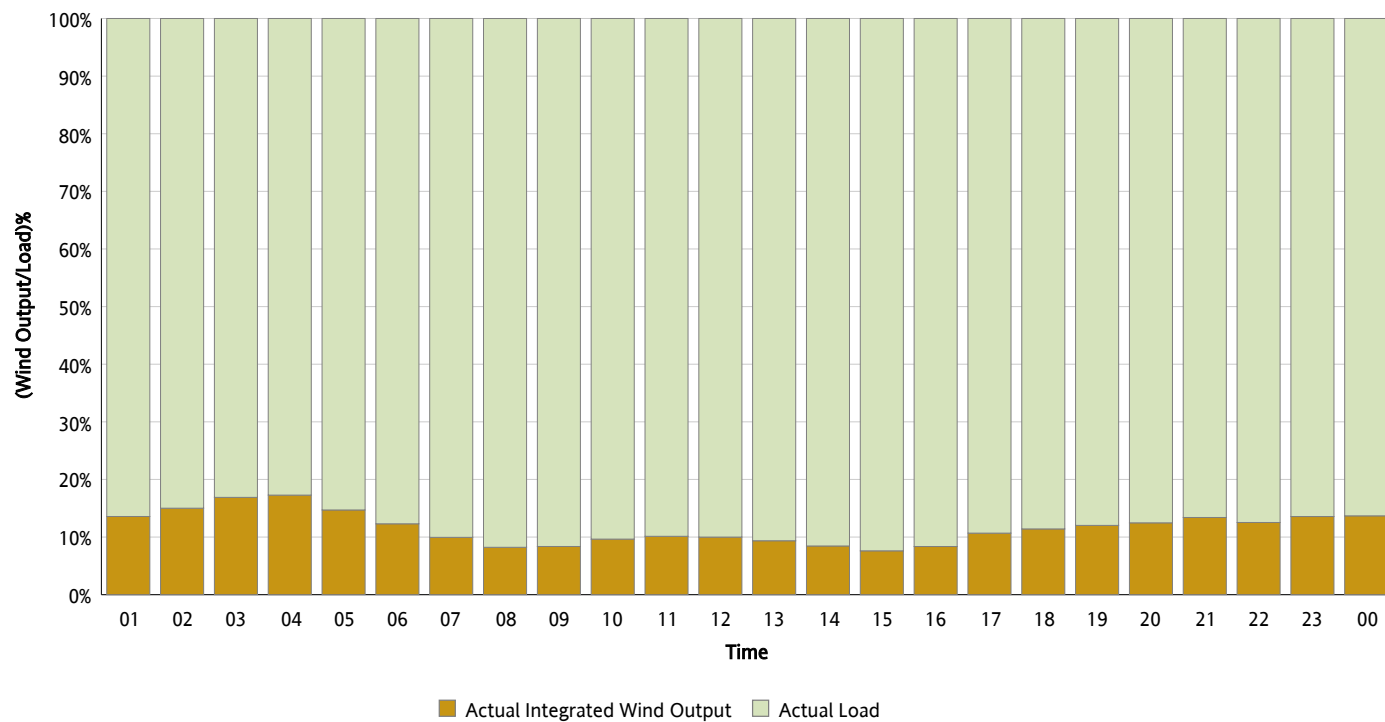
Actual Wind Output as a Percentage of the Total Installed Wind Capacity

05/23/2014



Actual Wind Output as a Percentage of the ERCOT Load

05/23/2014



ERCOT Load vs. Actual Wind Output

05/16/2014 - 05/23/2014

